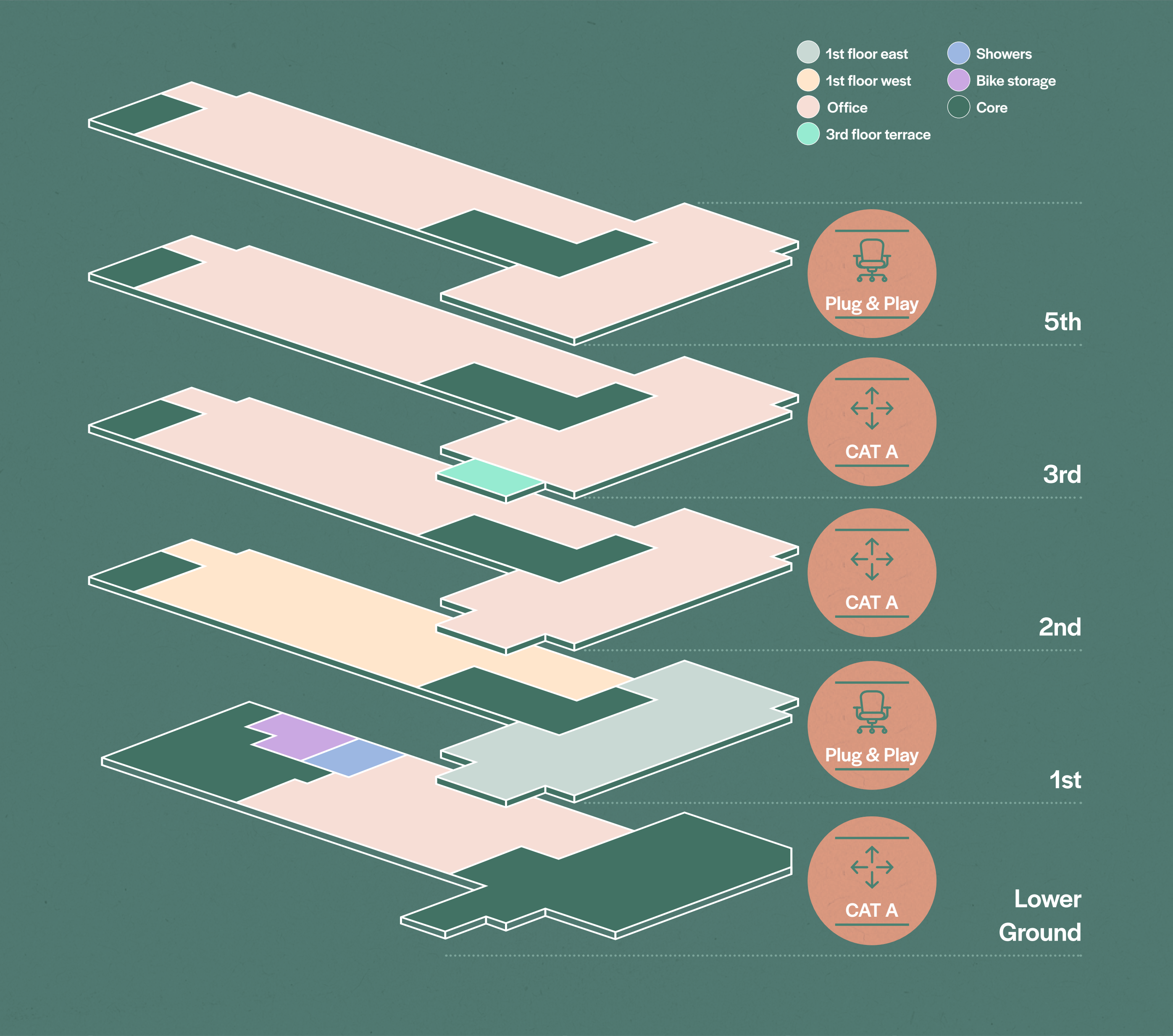


10 WARWICK LANE
LONDON EC4

ST. PAUL'S
HOUSE

Floor	Use	Condition	Sq ft	Sq m
5th	Office	Plug & Play	4,487	417
3rd	Office Terrace	CAT A	4,968 (158)	462 (14.7)
2nd	Office	CAT A	5,158	479
1st – West	Office	Plug & Play	3,056	284
1st – East	Office			LET
LG	Office	CAT A	2,336	217
Total			20,005	1,859

Subject to final measurement



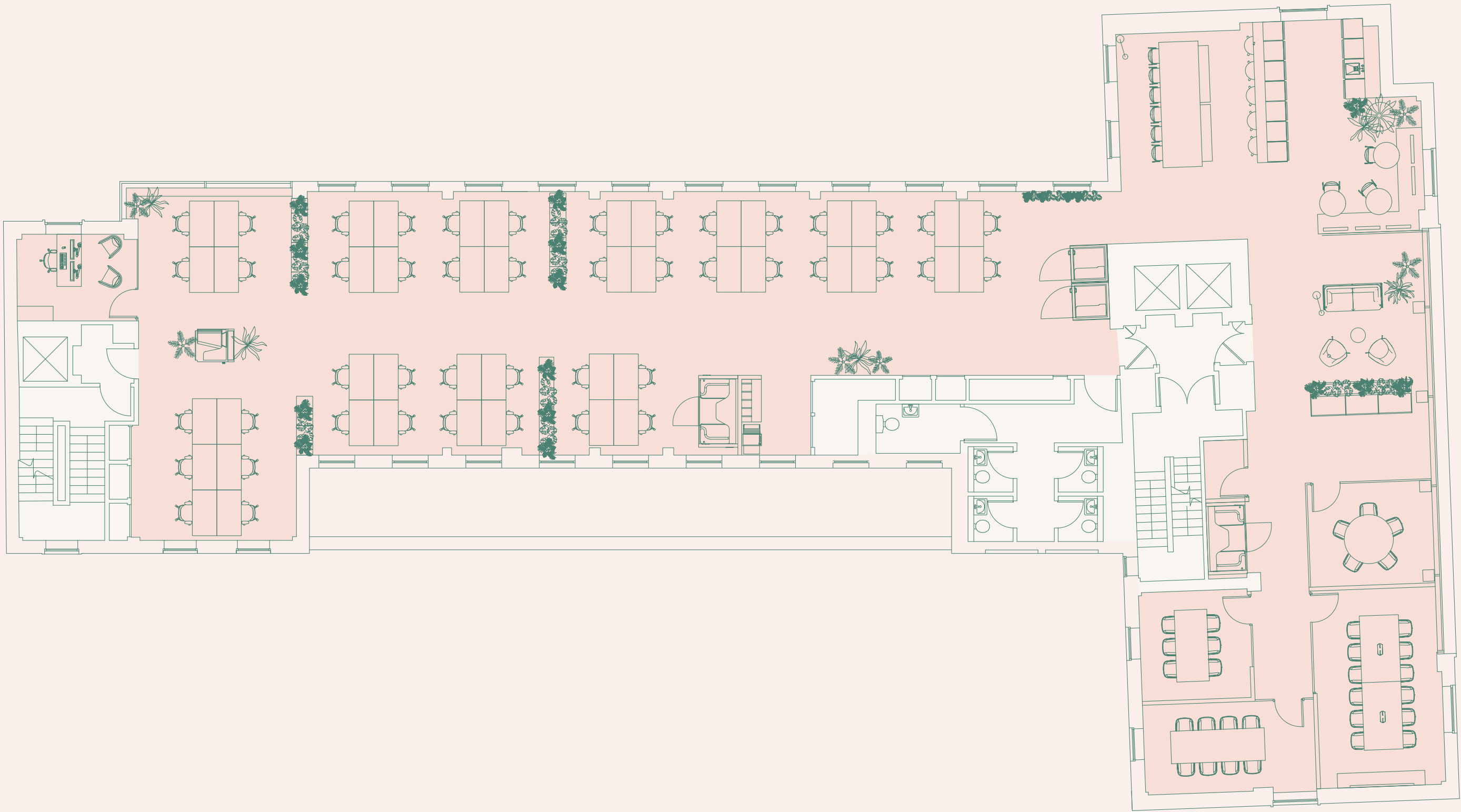
FLOOR / SPACE PLANS

Plans not to scale.
For indicative purposes only.



5th Floor – Plug & Play

4,487 sq ft / 417 sq m



Open plan workstations	46
Private office	01
12 person board room	01
8 person meeting room	01
6 person meeting room	01
5 person meeting room	01
1 person call pods	02
2 person call pods	02
Breakout area	01
Kitchenette / breakout	01
Welcome area	01

Key

Office

Core

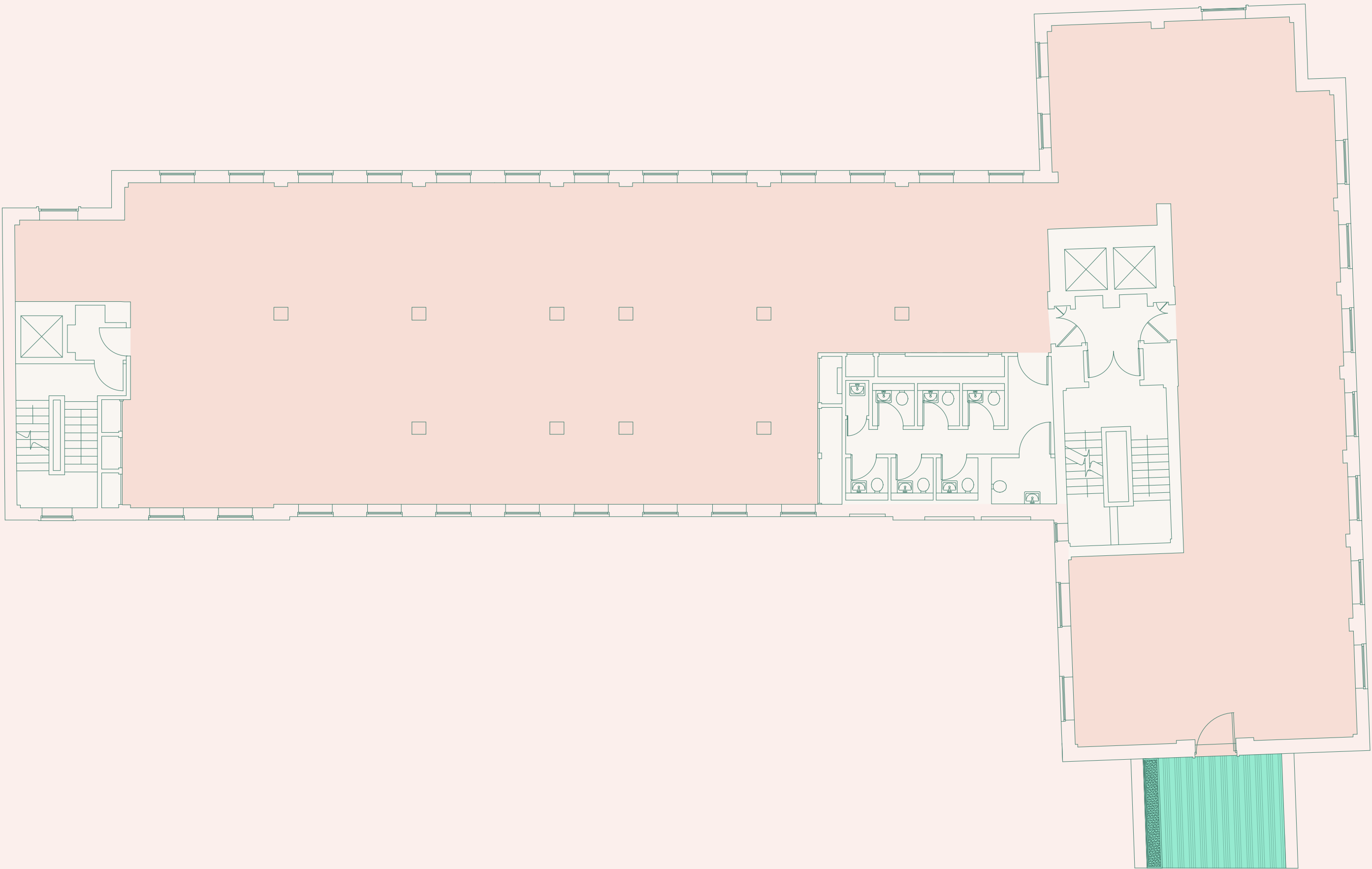
FLOOR / SPACE PLANS

Plans not to scale.
For indicative purposes only.



3rd Floor – CAT A

4,968 sq ft / 462 sq m



Warwick Lane

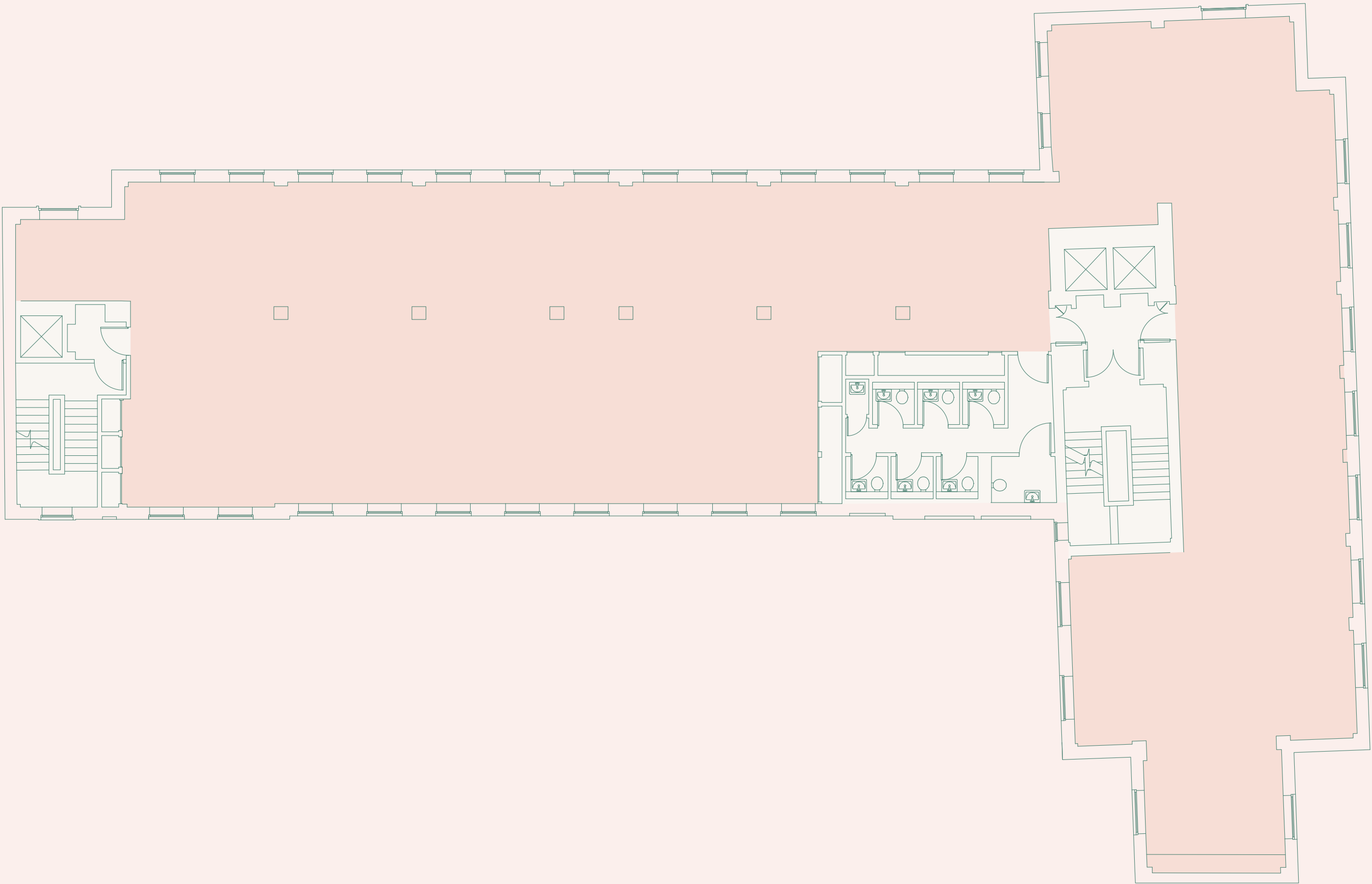
- Key
- Office
 - Terrace
 - Core

FLOOR / SPACE PLANS

Plans not to scale.
For indicative purposes only.



2nd Floor – CAT A
5,158 sq ft / 479 sq m



Warwick Lane

Key

- Office
- Core

FLOOR / SPACE PLANS

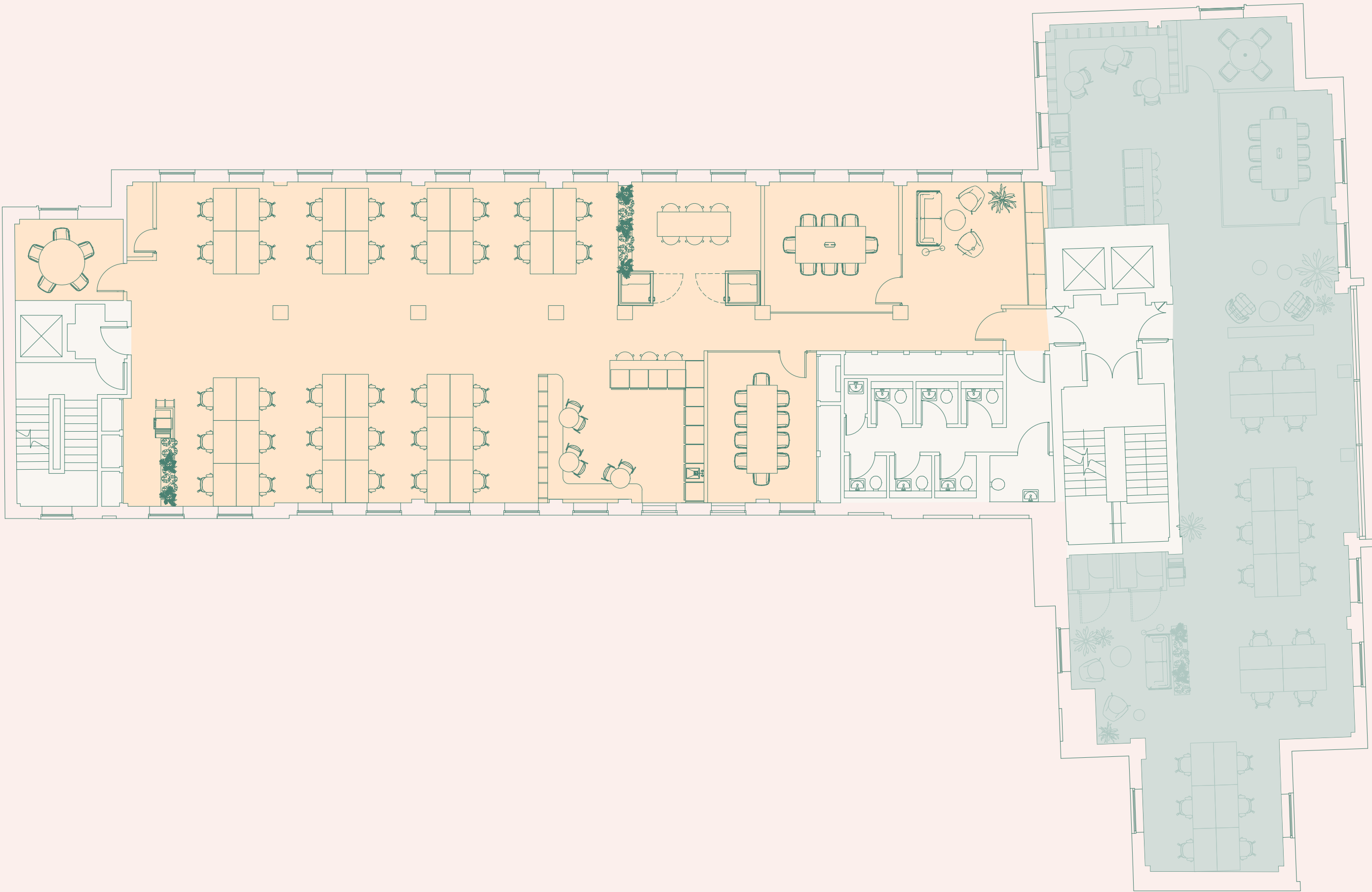
Plans not to scale.
For indicative purposes only.



1st Floor – Plug & Play

West Suite
3,056 sq ft / 284 sq m

East Suite – LET



West Suite

Open plan workstations	34
10 person meeting room	01
8 person meeting room	01
5 person meeting room	01
Call pods	02
Kitchenette / breakout	01
Breakout area	01
Welcome area	01

Key

West

East

Core

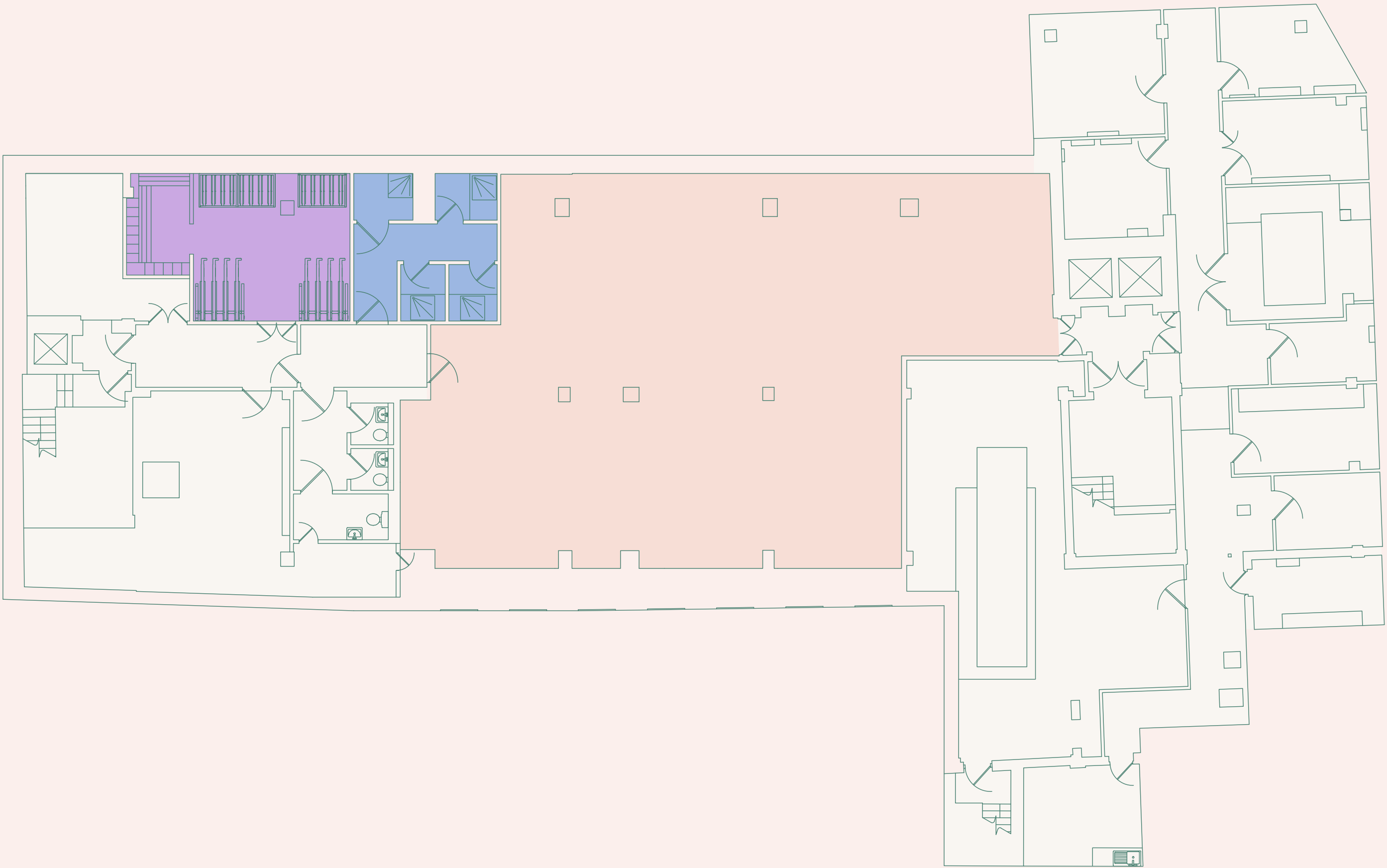
FLOOR / SPACE PLANS

Plans not to scale.
For indicative purposes only.



Lower Ground Floor – CAT A

2,336 sq ft / 217 sq m



- Key
- Office
 - Bike storage
 - Showers
 - Core